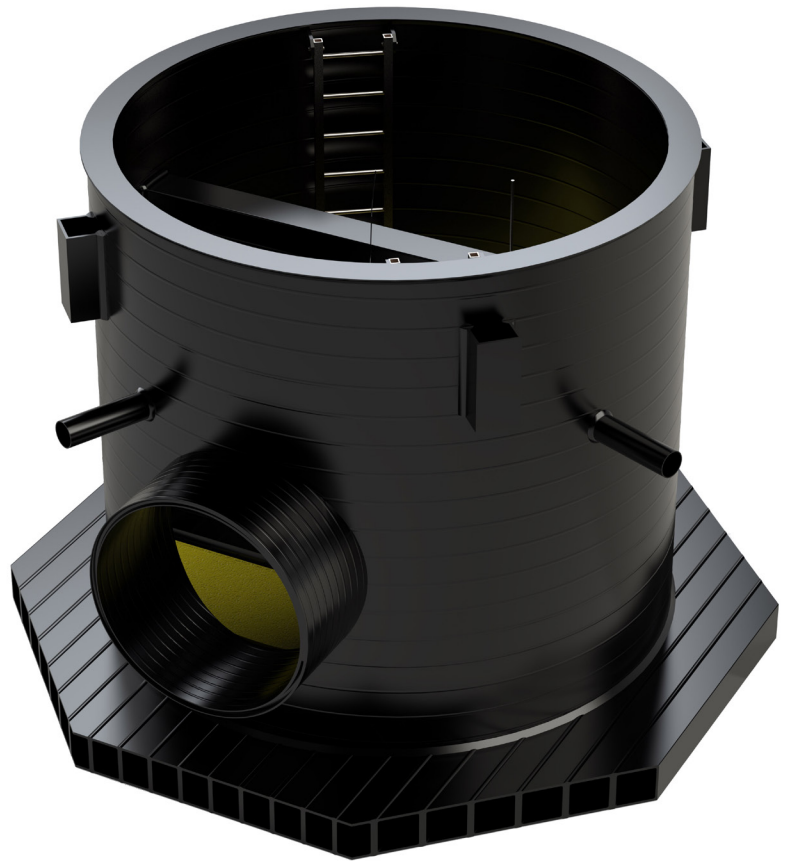


## Flow Control Chambers

**Weholite Flow Control Chambers are manufactured and assembled off site and are designed to meet project specific requirements using a standard set of components. This improves site productivity, reduces installation time and construction materials, and provides major savings on programme costs.**

Chambers can be utilised as part of a Weholite attenuation system, attached to a small diameter surface water / sewerage system, or as a pipe-based CSO Control Chamber or in rectangular form using Weholite Modular.

- *Wide range of sizes*
- *Chambers up to 3.5m dia*
- *Light weight*
- *Resistant to H<sub>2</sub>S*
- *Abrasion resistant*
- *Anti-slip benching*
- *In-factory manufacture and assembly*
- *Lifting points*

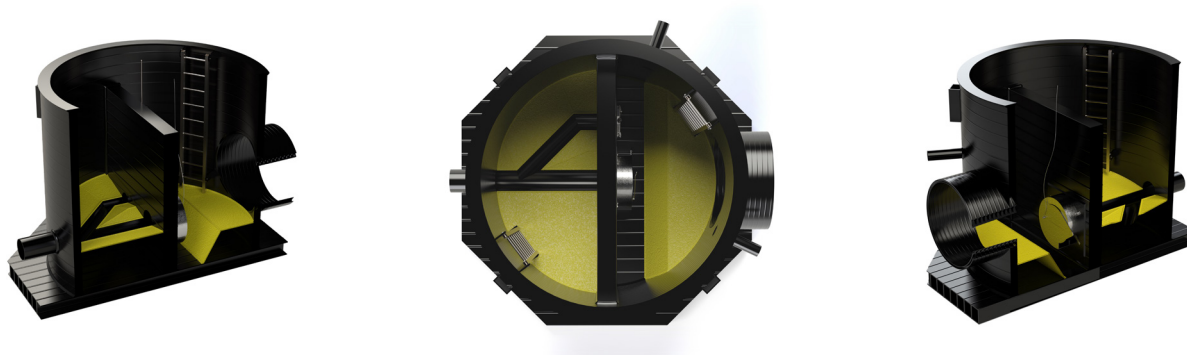


Having been prefabricated at the manufacturing plant in Newport, Chambers are delivered ready to install with any type of flow control devices factory-fitted.

Weholite is unique in providing chamber systems in HDPE without any need for concrete inside or outside providing structural integrity.

Features	Benefits
Available in sizes from 900mm to 3500mm.	Huge choice of sizes available sufficient for almost all applications.
Designed in line with Sewers for Adoption and/or specific Water Company requirements for S104 adoption*.	Meets industry requirements.
Bespoke engineering designs.	Reduces the need for site-built solutions with long programme times.
Light weight	Reduces installation time, resulting in a lower health & safety risk for onsite personnel and minimal disruption to local communities and the environment.
Chambers available in diameters up to 3.5m internal.	Huge choice of chamber sizes available.
Ready to use immediately.	Enables super-fast connection and operation.
Totally resistant to hydrogen sulphide (H <sub>2</sub> S).	Can be used in harsh conditions.
HDPE has the best abrasion resistance.	Ensures better flow properties. Very low maintenance required.
Air tested.	Proven functional integrity.
Fully tested, factory built components.	Guaranteed water-tight performance.
Designed to resist groundwater pressures.	Improves system reliability.
Supplied with a structural base.	Resistant to groundwater pressure.
Yellow anti-slip benching factory fitted.	Ensures safe movement within the manhole.
Concrete surround not required.	Saves time and cost and improves carbon footprint.
No rocker pipes needed.	Delivers savings on programme.
Equipped with a Weholite Modular weir wall.	No requirement for concrete reinforcement.
Complete with lifting points.	Facilitates quick delivery and easy installation.
Full structural design package available.	Weholite support ensures optimal performance.
BBA HAPAS certification for pipes from 450mm to 3500mm internal diameter.	Approved for use by Highways Authorities in England, Wales, Scotland and Northern Ireland.

\* All UK Water Companies have differing specifications and requirements. Please contact SDS for specific advice.



WFCC DS/0324